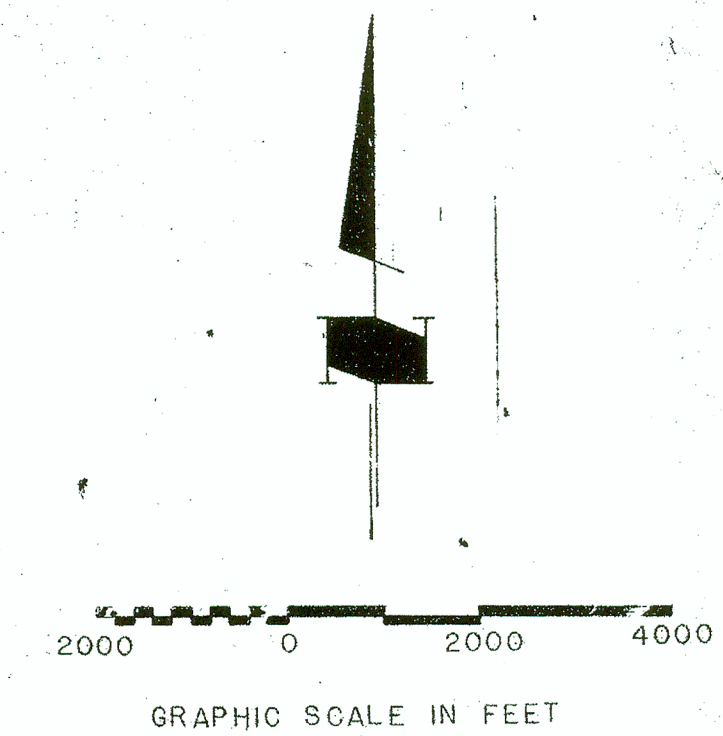


NOTE: ALL ELEVATIONS ARE IN FEET ABOVE SEA LEVEL
ESTABLISHED AIRPORT ELEVATION 981 FT.



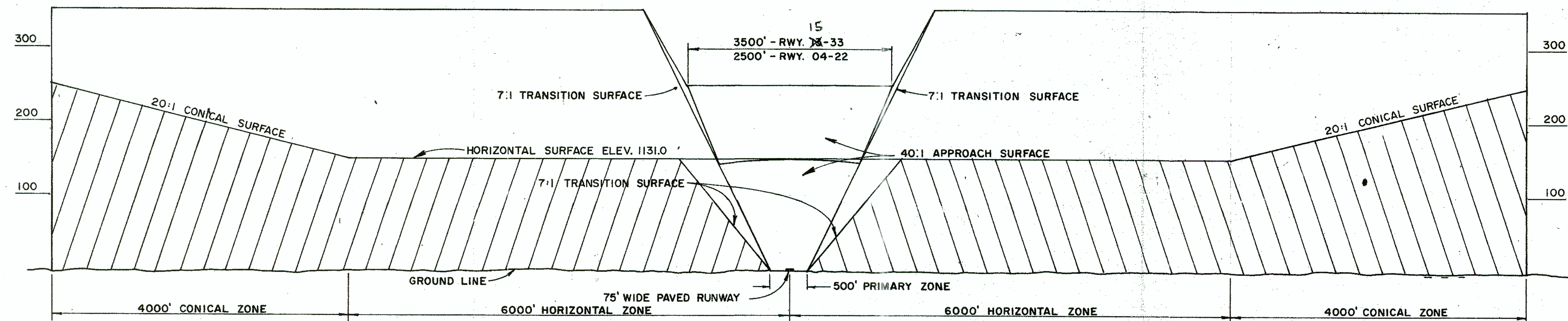
BASE MAP SOURCE: U.S. GEOLOGICAL SURVEY QUADRANGLE MAPS

I hereby certify that this plan, specification, or report was prepared by me or under my direct supervision and that I am duly Registered Professional Engineer under the laws of the State of Minnesota.

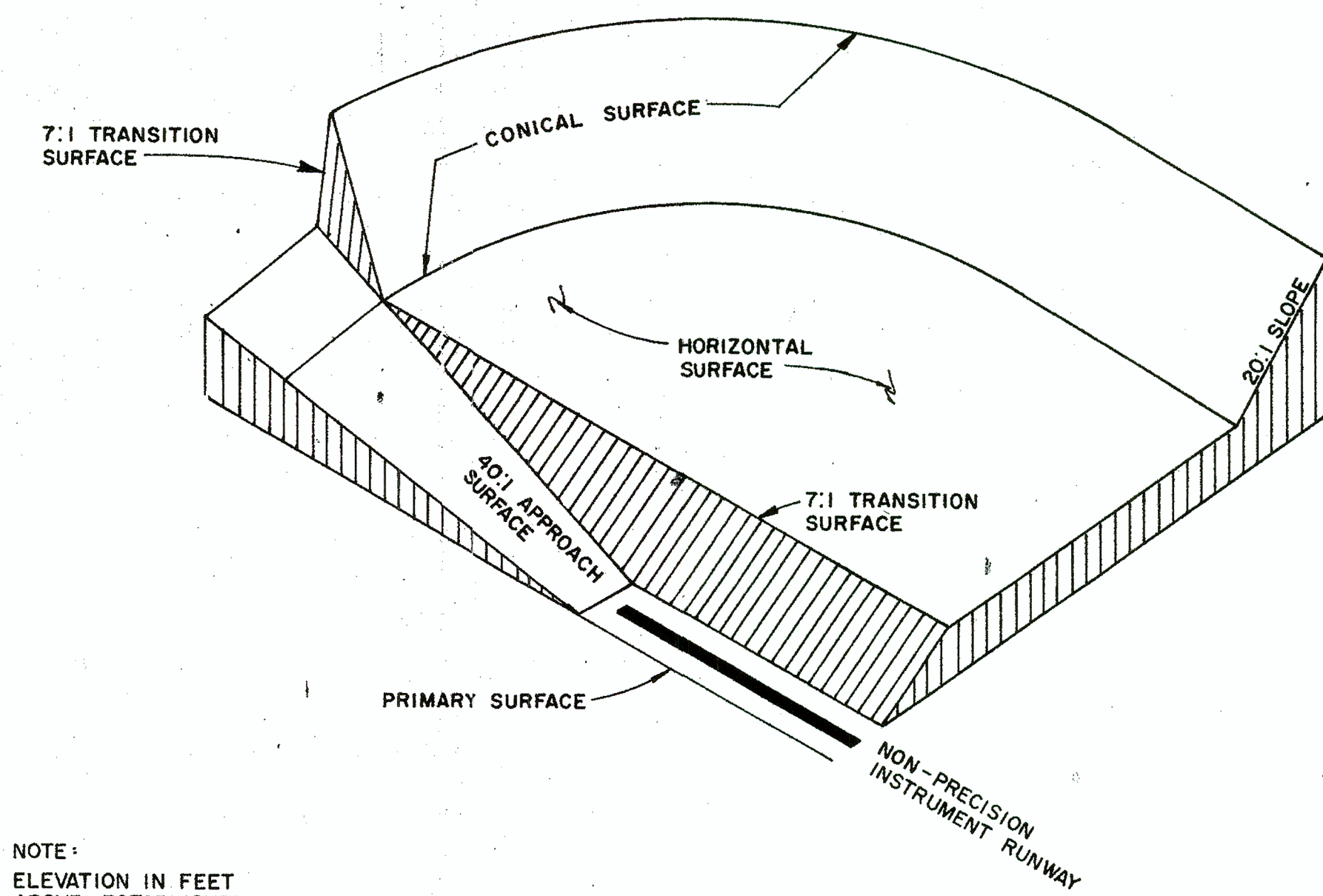
John C. Johnson
JOHN C. JOHNSON
Date *May 14, 1977* Reg. No. *11546*

REVISIONS		SCALE SHOWN	DESIGN J.C.J.	CHECKED B.J.L.	DRAWN T.J.S.	DATE 5/11/77
BY	DATE	CHANGE				
KMK KIRKHAM MICHAEL & ASSOCIATES ARCHITECTS ENGINEERS PLANNERS MINNEAPOLIS, MINNESOTA						SHEET 1 OF 3

**PRINCETON MUNICIPAL AIRPORT
AIRSPACE ZONING PLAN**

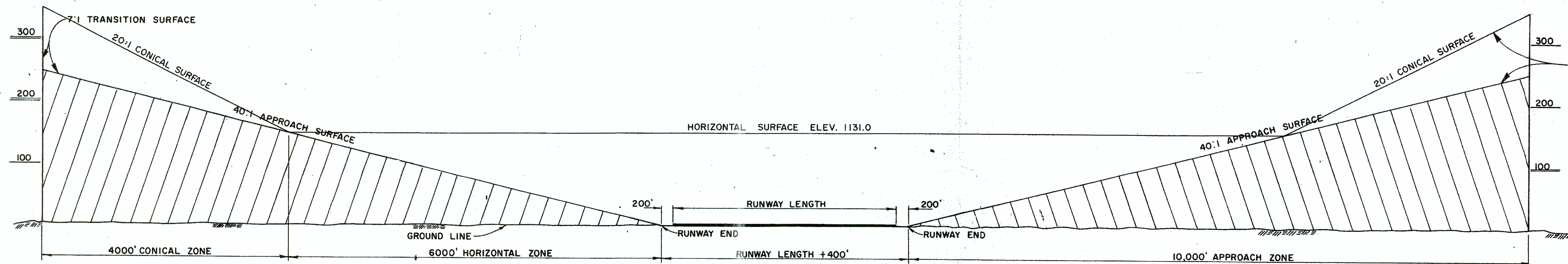


**TYPICAL TRANSVERSE SECTION
ACROSS RUNWAY**
NO SCALE



**PERSPECTIVE VIEW SHOWING
IMAGINARY SURFACES**
NO SCALE

NOTE:
ELEVATION IN FEET
ABOVE ESTABLISHED
AIRPORT ELEVATION



TYPICAL LONGITUDINAL RUNWAY CENTERLINE SECTION
NO SCALE

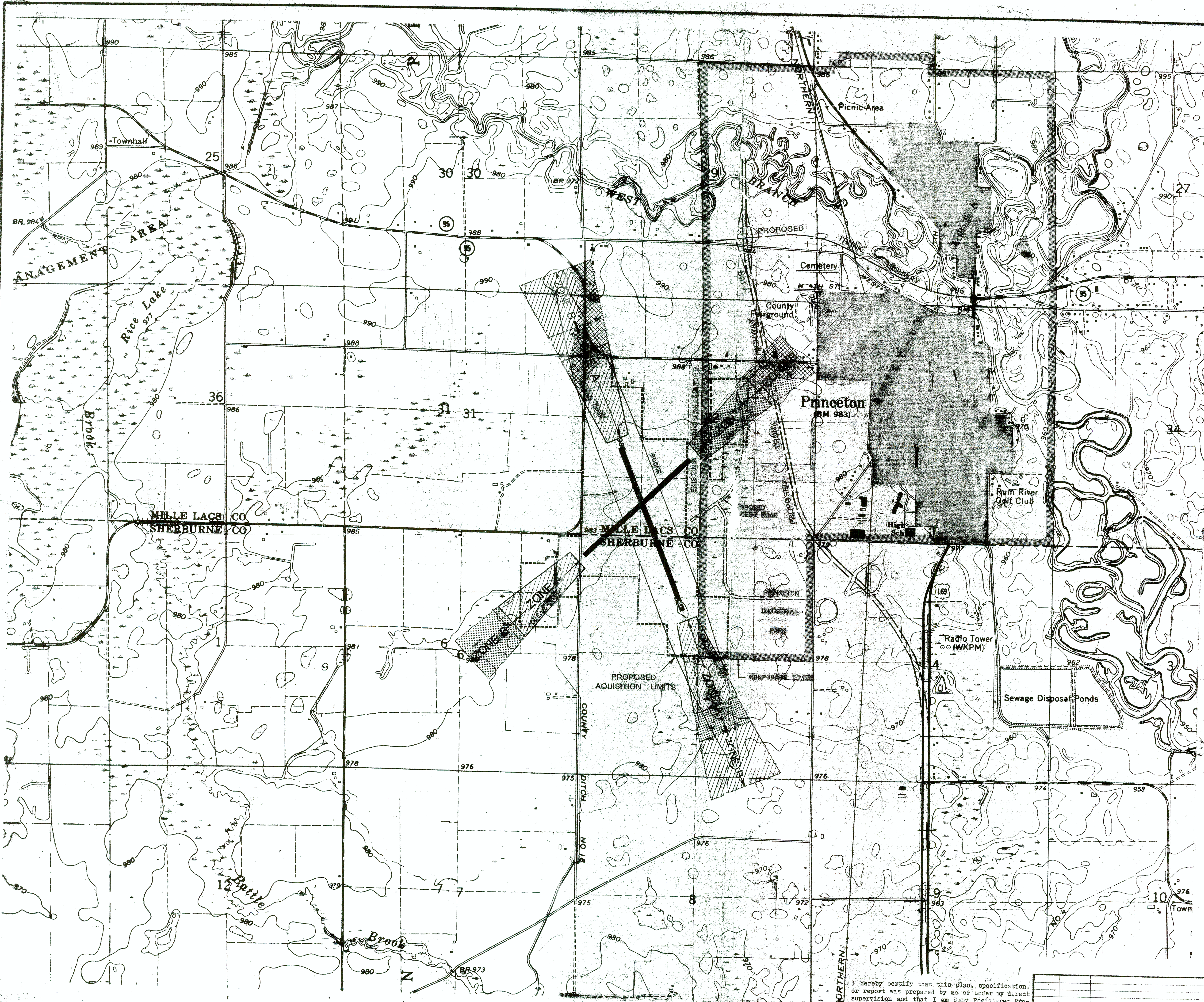
NOTE: ELEVATION IN FEET
ABOVE RUNWAY END

I hereby certify that this plan, specification, or report was prepared by me or under my direct supervision and that I am duly Registered Professional Engineer under the laws of the State of Minnesota.

John C. Johnson
JOHN C. JOHNSON

Date May 14, 1977 Reg. No. 11546

				PRINCETON MUNICIPAL AIRPORT					
				TYPICAL AIRSPACE SECTIONS					
J.C.J.	OCT 1977	REVISIONS PER CHANGE	MIN/DOT	COMMENTS	SCALE SHOWN	DESIGN J.C.J.	CHECKED B.J.L.	DRAWN T.J.S.	DATE 5/11/77
				KIRKHAM MICHAEL & ASSOCIATES ARCHITECTS ENGINEERS-PLANNERS MINNEAPOLIS, MINNESOTA				SHEET 2	
								OF 3	

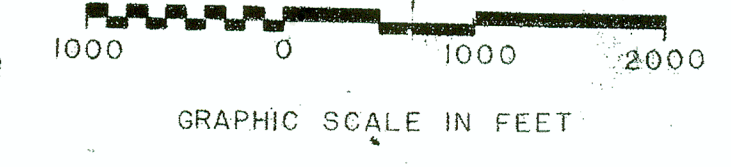
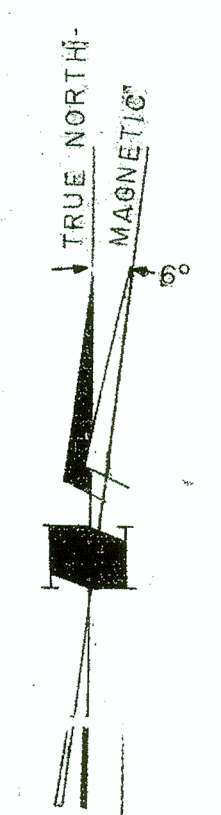


NOTE:
 ZONE A SHALL CONTAIN NO BUILDING OR TEMPORARY STRUCTURES AND SHALL BE RESTRICTED TO THOSE USES WHICH WILL NOT CREATE, ATTRACT, OR BRING TOGETHER AN ASSEMBLY OF PERSONS THEREON, PERMITTED USES MAY INCLUDE AGRICULTURE, LIGHT OUTDOOR RECREATION (NONSPECTATOR), CEMETERIES AND AUTO PARKING.

ZONE B CAN BE USED FOR AGRICULTURE, RESIDENTIAL, COMMERCIAL, AND INDUSTRIAL PURPOSES WITH THE FOLLOWING LIMITATIONS: THERE CAN BE NO MORE THAN ONE SINGLE-FAMILY DWELLING PER THREE-ACRE TRACT. COMMERCIAL AND INDUSTRIAL SITES CAN BE NO LESS THAN THREE ACRES, CONTAIN NO DWELLINGS, CONTAIN NO MORE THAN ONE BUILDING PER THREE ACRE TRACT, OR CONTAIN A SITE POPULATION THAT EXCEEDS 15 TIMES THAT OF THE SITE ACREAGE. CHURCHES, HOSPITALS, SCHOOLS, THEATERS, STADIUMS, HOTELS AND MOTELS, TRAILER COURTS, CAMPGROUNDS, AND OTHER PLACES OF PUBLIC OR SEMIPUBLIC ASSEMBLY ARE SPECIFICALLY PROHIBITED IN ZONE B.

FOR COMPLETE EXPLANATION OF USES PERMITTED IN ZONE B SEE MINNESOTA REGULATION AERO 10

SOURCE:
 MINNESOTA STATE REGULATIONS; RULES AND REGULATIONS OF THE DEPARTMENT OF AERONAUTICS 1974 EDITION



BASE MAP SOURCE: U.S. GEOLOGICAL SURVEY QUADRANGLE MAPS

- LAND USE
- AGRICULTURAL
 - OPEN SPACE OR OTHER
 - RURAL RESIDENTIAL

I hereby certify that this plan, specification, or report was prepared by me or under my direct supervision and that I am duly Registered Professional Engineer under the laws of the State of Minnesota.

John C. Johnson
 JOHN C. JOHNSON
 Date May 11, 1977 Reg. No. 11596

REVISIONS		SCALE SHOWN	DESIGN	CHECKED	DRAWN	DATE
J.C.J.	DATE	REVISIONS PER MN/DOT CHANGE	B.J.L.	T.J.S.	T.J.S.	5/11/77

**PRINCETON MUNICIPAL AIRPORT
 LAND USE ZONING PLAN**

KMK KIRKHAM MICHAEL & ASSOCIATES
 ARCHITECTS ENGINEERS PLANNERS
 MINNEAPOLIS, MINNESOTA

SHEET **3**
 OF **3**